

NOTE: Prepare Black Wrap for Scoop

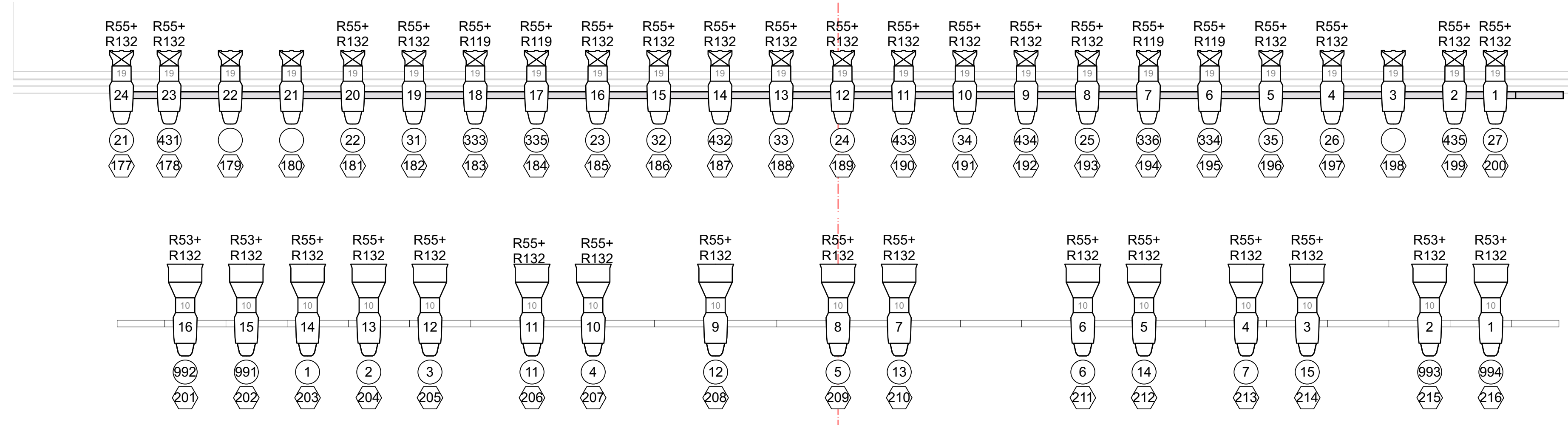
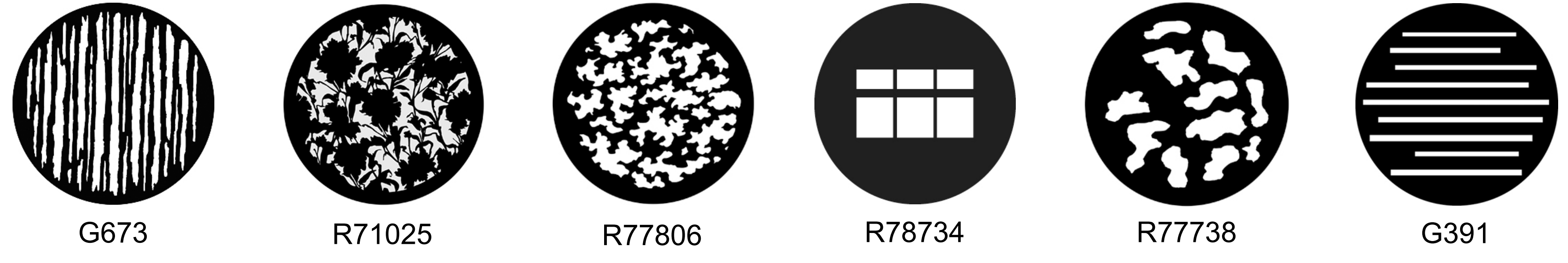
NOTE: 1. Please prepare 12"Par64 barndoor (2 spare)
2. Put Birdies on their general locations based on plots, not needs
3. Both sides of bottom lighting ladders height are 1'

LINESET SCHEDULE

Table with 3 columns: Item, Trim, Dist. to PL Line No. Includes items like Rear Screen, LX 5, Focus Track3, Window Mullions, Arch Wall, LX 4, Focus Track2, Black Border, Flying Mics, Chandelier, Pendant Lights, Flying Border, Tracking Panels/Choir Mics, LX 3, LX 2, LX 1, Bridge US, and Bridge DS.

Instrument Summary

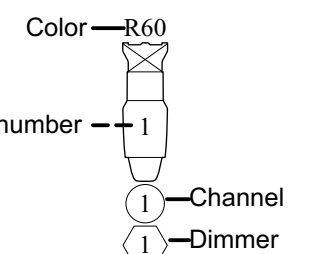
- Color - R60
Unit number - 1
Channel
Dimmer
High End SoloFrame2000
Martin MAC 301
Chauvet COLORado 3 Solo
ETC ColorSource Spot 30kg
ETC Source4 50deg
ETC Source4 30deg
ETC Source4 26deg
ETC Source4 19deg
ETC Source4 10deg 750W
Altman PAR 64 VNSP
USITT PAR64-MFL
UltraFX Radiance Hazer
Altman 14in Scoop
ETC Source4 PAR WFL
USITT PAR MR-16 Birdie-MFL
MiniStrip



Scale 1/2"=1'0"
Director Tyrone Phillips
Scenic Designer Alyssa Thomson
Costume Designer Meici Yang
Lighting Designer Yingman Tang
Assistant Lighting Designer Nicole Rataj
Head Electrician Brian Runge
Sound Designers Nick Yovina
Technical Director Capri Agresta
Stage Manager Sidney Sprunger
Lighting Design Advisor Brant Murray
Head Electrician Advisor Lisa Kidd
Dramaturg London
Designed By: Yingman Tang
yingman2@illinois.edu (217) 954-3594
Krannert Center for the Performing Arts
Festival Theatre
Overheads+FOH



Instrument Summary



- High End SolaFrame2000
- Martin MAC 301
- Chauvet COLORado 3 Solo
- ETC ColorSource Spot 50deg
- ETC Source4 50deg
- ETC Source4 36deg
- ETC Source4 26deg
- ETC Source4 19deg
- ETC Source4 10deg 750W
- Altman PAR 64 VN5P
- USITT PAR64-MFL
- UltratecFX Radiance Hazer
- Altman 14in Scoop
- ETC Source4 PAR WFL
- USITT PAR MR-16 Birdie-MFL



Scale

1/2"=1'0"

Director	Tyrone Phillips
Scenic Designer	Alyssa Thompson
Costume Designer	Meici Yang
Lighting Designer	Yingman Tang
Media Designer	Danielle Johnson
Dramaturg	London
Assistant Lighting Designer	Nicole Rataj
Head Electrician	Brian Runge
Sound Designers	Nick Yovina
Technical Director	Capri Agresta
Stage Manager	Sidney Sprunger
Lighting Design Advisor	Brant Murray
Head Electrician Advisor	Lisa Kidd

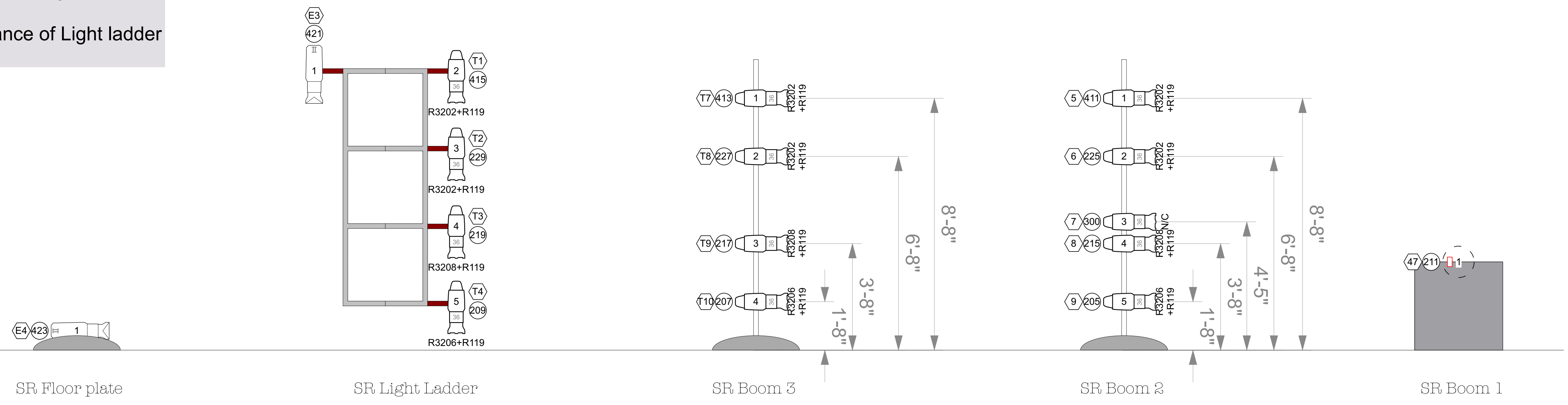
Designed By:
Yingman Tang
yingman2@illinois.edu
(217) 954-3594

Krannert Center for the Performing Arts
Festival Theatre

Deck 1

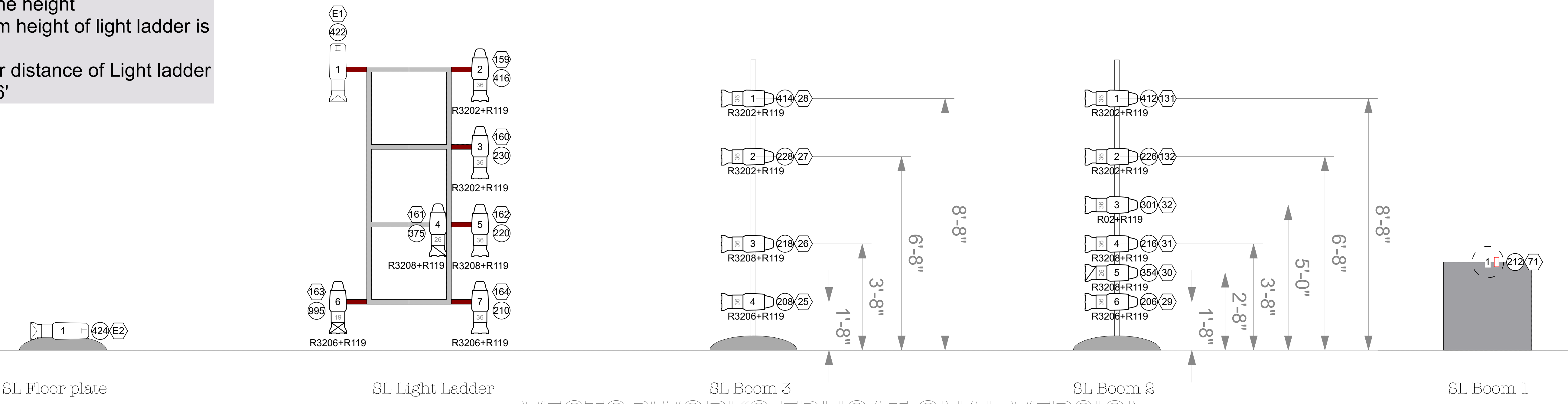
NOTE: 1. All Boom lights and ladder lights are with Sidearms
2. Y axis is the height
3. The bottom height of light ladder is 1'8"
4. The center distance of Light ladder from PL is 16'

USR ← DSR



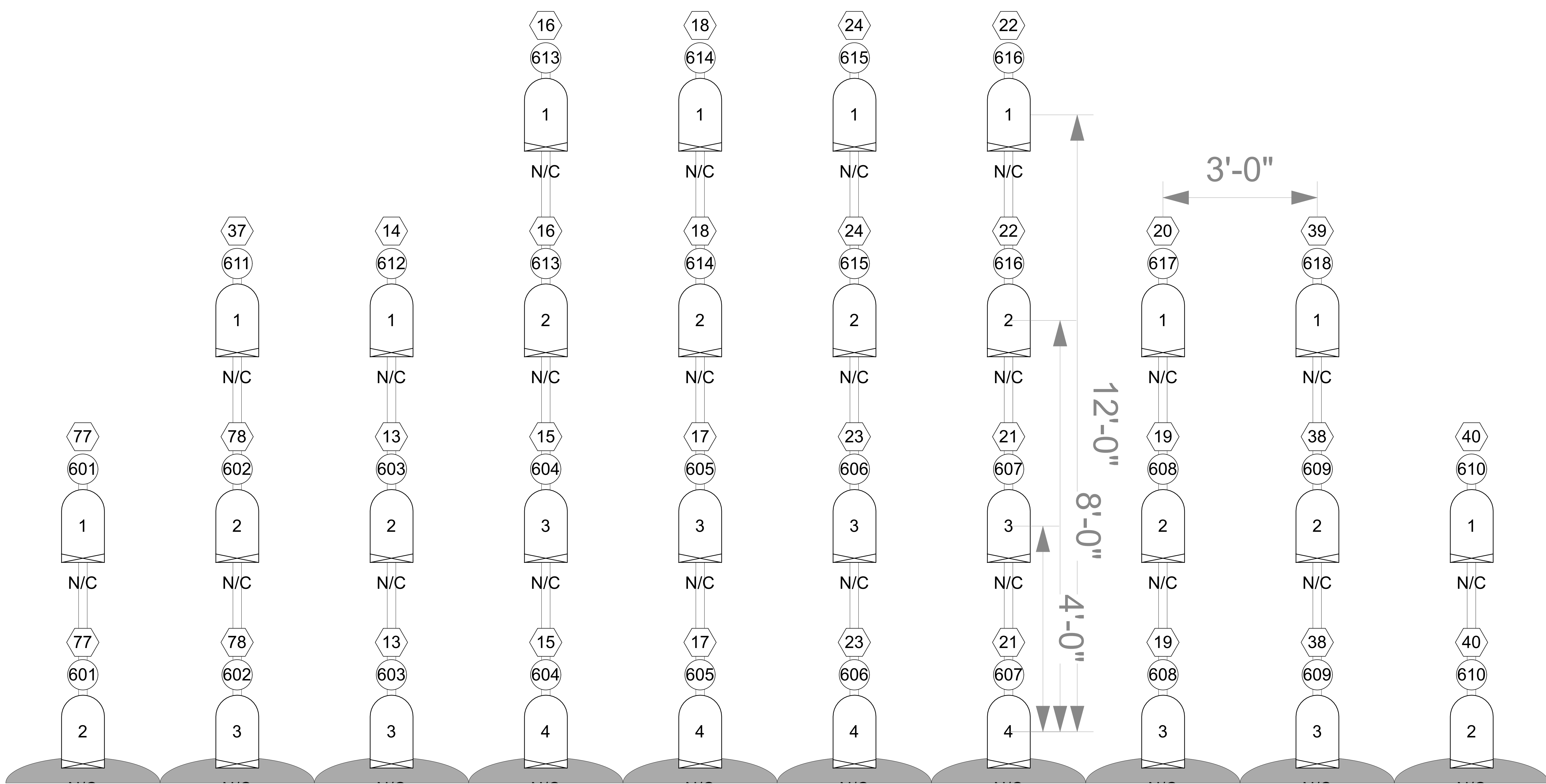
NOTE: 1. All Boom lights and ladder lights are with Sidearms
2. Y axis is the height
3. The bottom height of light ladder is 1'8"
4. The center distance of Light ladder from PL is 16'

USL ← DSL





**NOTE: 1. Matrix booms are just in front of the US cage.
2. Y axis is the height**



Instrument Summary

- Color — R60
- Unit number — 1
- Channel — 1
- Dimmer — 1
- High End SolaFrame2000
- Martin MAC 301
- Chauvet COLORado 3 Solo
- ETC ColorSource Spot 50deg
- ETC Source4 50deg
- ETC Source4 36deg
- ETC Source4 26deg
- ETC Source4 19deg
- ETC Source4 10deg 750W
- Altman PAR 64 VN5P
- USITT PAR64-MFL
- UltratecFX Radiance Hazer
- MDG The One
- Altman 14in Scoop
- ETC Source4 PAR WFL
- USITT PAR MR-16 Birdie-MFL



Scale

0.12" = 1'0"

Director	Tyrone Phillips
Scenic Designer	Alyssa Thompson
Costume Designer	Meici Yang
Lighting Designer	Yingman Tang
Media Designer	Danielle Johnson
Dramaturg	London
Assistant Lighting Designer	Nicole Rataj
Head Electrician	Brian Runge
Sound Designers	Nick Yovina
Technical Director	Capri Agresta
Stage Manager	Sidney Sprunger
Lighting Design Advisor	Brant Murray
Head Electrician Advisor	Lisa Kidd

Designed By:
Yingman Tang
yingman2@illinois.edu
(217) 954-3594

Krannert Center for the Performing Arts
Festival Theatre

Matrix Lights